

CFE-Replacement LFP S Pro Battery



Advantages

1. Support 4 batteries connected in parallel.
2. Support external connections in series with voltage up to 51.2V.
3. Active balancing function between batteries, true parallel with RS485 communication.
4. Quick connection and insulation protection.
5. High-resolution, low-power OLED shows battery power & voltage, soft switch design.
6. Stainless steel handles, high durability, easy to carry, and guarantee 3000 fatigue tests.
7. Rugged stainless steel body with wonderful looking and durable.

Self-developed BMS

Eight-fold safety protection, safe and reliable



Over Charge Protection



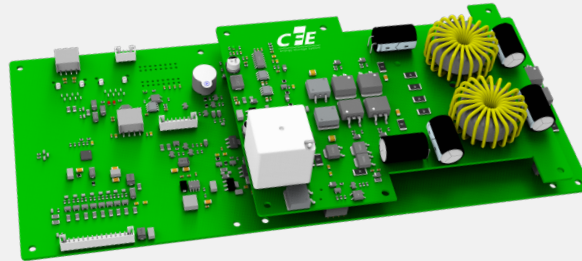
Over Discharge Protection



Short Circuit protection



Over Load protection



Overheating protection



Cryogenic protection



Over Current Protection



Over Voltage protection

CFE S Pro batteries are based on Lithium Iron Phosphate technology (LiFePO₄), the safest Lithium technology available today. On top of that our bespoke casing and self-developed BMS System further increase safety and durability.

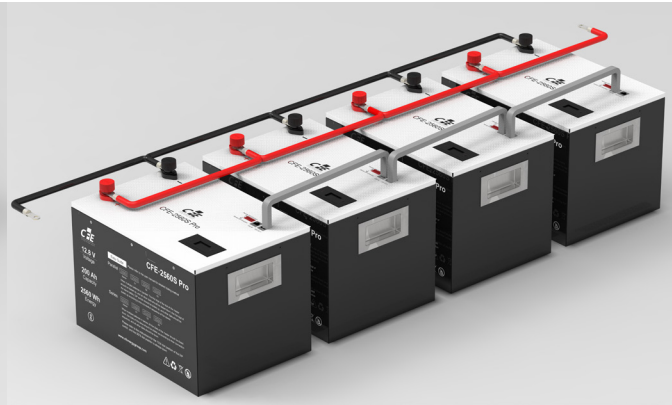
Compared to conventional lead-acid batteries, the lithium battery offers an enormous weight and space saving. It is very efficient, has extremely high performances and is maintenance free.

- Low weight
- Low Maintenance
- Low self-discharge
- High capacity
- Safest Lithium Technology
- High cycle count

Series



Parallel



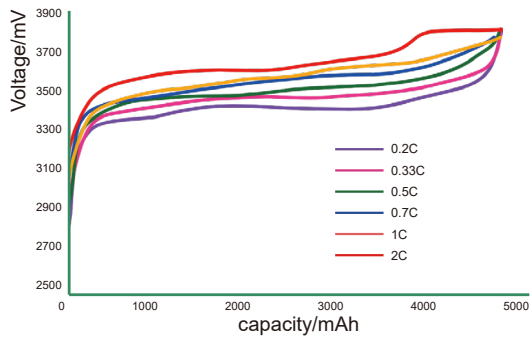
Specifications

Model	CFE-2560S Pro
Nominal Voltage	12.8V
Nominal Capacity @1C	200Ah
Charge Voltage	14.6V
Charge Current Max Continuous	50A
Discharge Current Max Continuous	100A
Discharge Voltage Minimum	10.4V
Pulse Current 5 Sec	125A
Weight	23.3kgs±0.5kgs
Dimensions L*W*H	360*260*250 mm
Calendar Life & Performance Guarantee ^[1]	a. 3500 cycles or 5 years , whichever comes first b. 1500 cycles or 2 years , whichever comes first

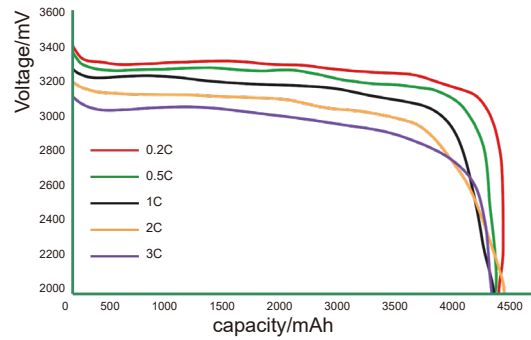
[1] Test conditions: 0.2C Charging/Discharging, @25°C, 80% DOD

Environmental Requirements and Certifications

Operating Temperature	Charging:0°C to 45°C
	Discharging :-20°C to 60°C
Storage Temperature	1 year : -20~25°C
	3 months : -20~45°C
	1 month : -20~60°C
Relative Humidity (R H)	20~60 (No Condensed Water)
Safety Certificate	CE(IEC 62040), MSDS
Transportation Certificate	UN38.3



Charging curve



Discharge curve

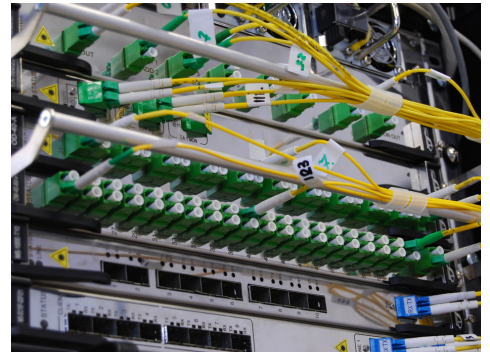
Application



Home lighting



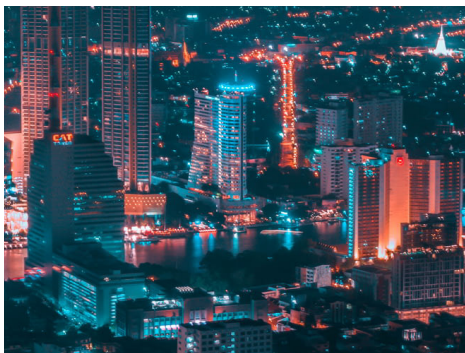
UPS



Telecom power



Photovoltaic integration



Power Systems



Emergency lighting



Power supply



Outdoor power bank



Instrument power



First-class power battery system supplier
First-class supplier of energy storage and microgrid

CF Energy Co., Ltd.

Company Address:

Intelligent Manufacturing Base , Xianyang , Shaanxi , PRC .

Tel: (+86) 029-38367888

Web: www.cfenergygroup.com

E-mail: sales@cfenergygroup.com